

FEATURES:

- metric engineered product
- fully concealed cylinder hinge requiring the boring of 2 holes for cylinder placement
- cylinders are made of solid brass and linkage is heavy gauge brass plated steel
- small setting screw expands each cylinder when positioned in bored holes
- 180° opening angle
- for small to medium inset cabinet doors
- sold in pairs/instructions included
- easy and fast installation
- for door thicknesses of 1/2" to 3/4"

APPLICATIONS:

A cabinet door hinge for inset doors that are completely invisible when door/doors are closed.

SPECIFICATIONS:

A-E measurements in mm.
Wood thickness in inches.

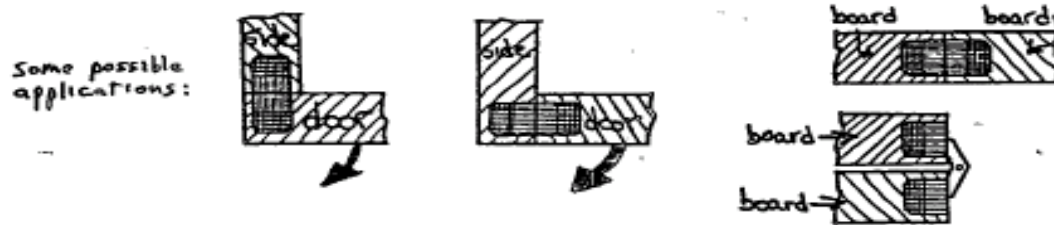
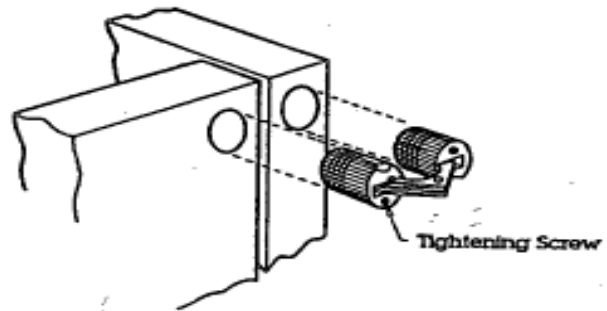
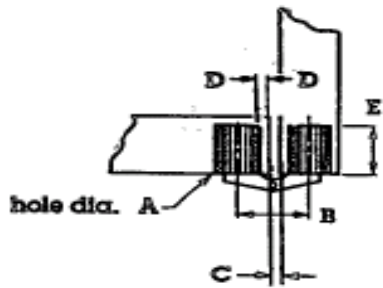
| Cat No. | A | B | C | D | E | Drill Bit No. | Min. Wood Thickness |
|---------|----|------|-----|-----|------|---------------|---------------------|
| 28555 | 10 | 16.5 | 2.5 | 2 | 10 | 27429i | 1/2" |
| 13516 | 12 | 20 | 3.5 | 2 | 13.5 | 28871 | 5/8" |
| 28563 | 14 | 23 | 3 | 3 | 15.5 | 26027 | 3/4" |
| 13524 | 18 | 27 | 3 | 3 | 18 | 21175 | 1" |
| 13573 | 24 | 36.5 | 3.5 | 4.5 | 25 | 28864 | 1-1/4" |

INSTALLATION:

Introduction: This is a metric engineered product. To properly install this product, it is necessary to bore (drill) a specified diameter hole to metric dimensions. The chart in figure 1 will give the correct size bit and catalog number.

1. Locate hinge position and mark center lines on case side and cabinet doors. Cylinders are to be centered on case and door having equal thicknesses.
2. Bore cylinder holes of correct diameter and depth. See chart-figure 1.
3. Tap cylinders into hole until flush with surface.
4. Tighten set screw 3-4 full turns with thin bladed screw driver.

Caution: Do not use oversize bits to bore cylinder holes.



The Woodworkers' Store 1994

