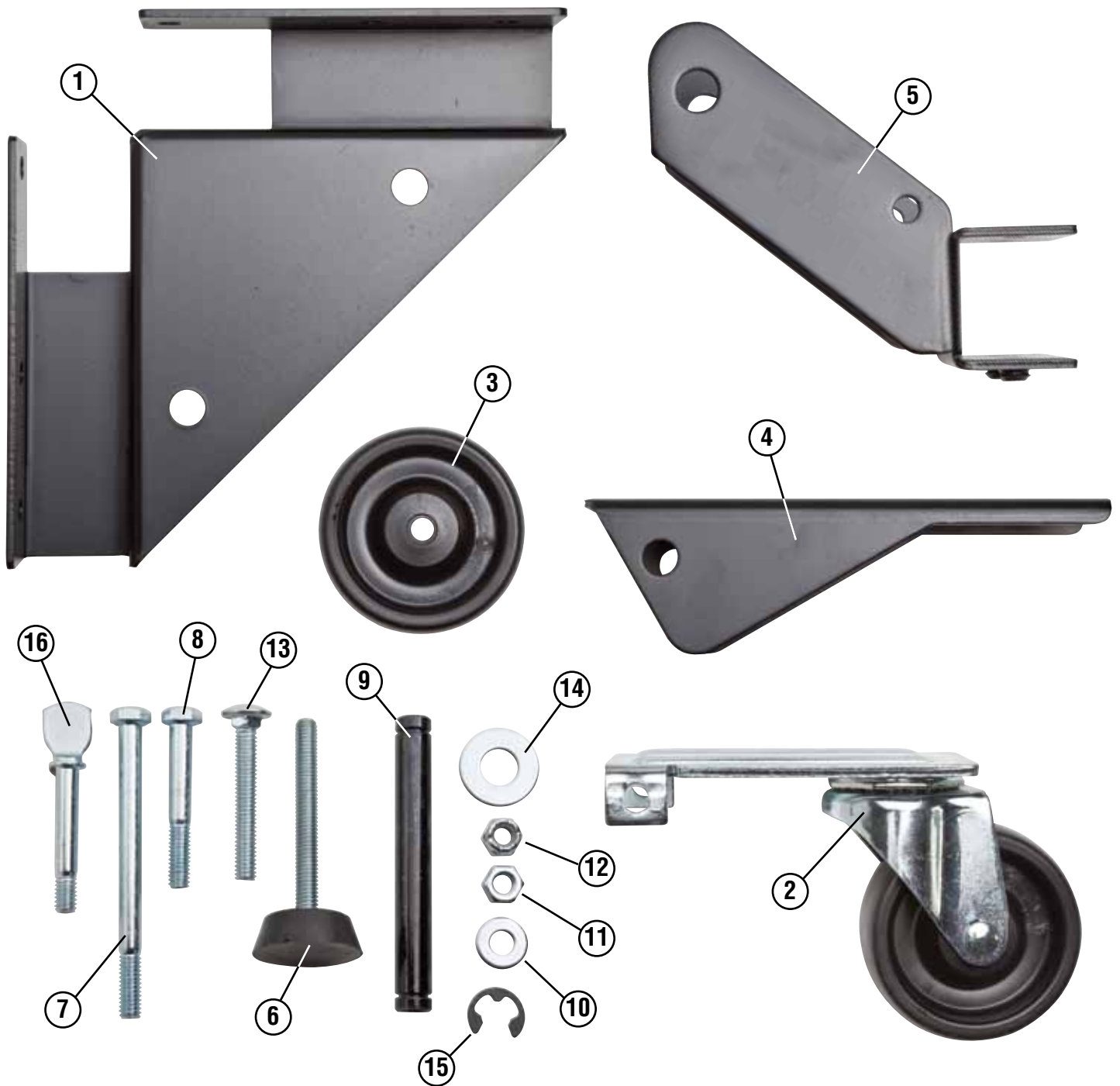


Congratulations on your purchase of the Power Tool Mobile Base! Follow these simple assembly instructions and you'll be moving your large power tools around easily in no time. Please read these instructions completely before starting to assemble your Power Tool Mobile Base. Familiarity with the process will make the steps easier to understand. Please follow all steps carefully.



**PARTS list**

	Quantity
1 Corner Bracket	4
2 Caster Assembly	1
3 Wheel	2
4 Foot Lever	1
5 Pivot Bracket	1
6 Leveling Legs	2
7 5/16"-18 x 4" Hex Head Screw	1
8 5/16"-18 x 2 1/4" Hex Head Screw	2

	Quantity
9 1/2" x 4" Pin	1
10 5/16" Flat Washer	4
11 5/16"-18 Hex Nut	20
12 5/16"-18 Lock Nut	3
13 5/16"-18 x 2" Carriage Head Screw	16
14 1/2" Flat Washer	4
15 Retaining Ring	2
16 5/16"-18 x 2" Thumb Screw	2



Fig. 1

## Base Assembly

1. Place the Wheels (3) into two Corner Brackets (1) and secure using the 2¼" Hex Head Screw (8) from inside the Corner Bracket (1) and secure with the 5/16"-18 Lock Nut (12). **Fig. 1.**

**Note:** When the Corner Brackets (1) are at 90° angles from each other the Wheels (3) should point in the same direction.

2. Determine best placement of Foot Lever (4) and wheels, keeping in mind that the Foot Lever (4) must be attached opposite the wheels. **Note:** Foot Lever (4) location must not interfere with the machine or cause the machine to be top-heavy when in the raised position.
3. Measure the footprint of the machine and add 1/2" to the width and length for the wood frame dimensions.
4. Cut two pieces of 1½" x 1½" hardwood for each measurement to make the frame (Total of 4 pieces).
5. Feed the cut pieces through the metal frame and align them so they are flush with the corners **Fig. 2.**
6. Mark placement of holes in the Corner Brackets (1) on the wooden pieces.
7. Position the Pivot Bracket (5) halfway on the foot lever board and mark hole locations. **Fig. 3.**
8. Looking down from above at front corner, measure 3/4" from the outer corner in each direction and draw intersecting perpendicular lines to mark the placement of the leveling legs. **Fig. 4.**
9. Carefully drill the 7/16" diameter holes on all twenty locations detailed in the previous steps.
10. Reassemble the base and attach the Corner Brackets (1) using the 5/16"-18 x 2" Carriage Bolts (13) and 5/16"-18 Hex Nuts (11). **Fig. 5.** **Note:** Insert the 5/16"-18 x 2" Carriage Bolts (13) from the inside of the Corner Brackets (1).

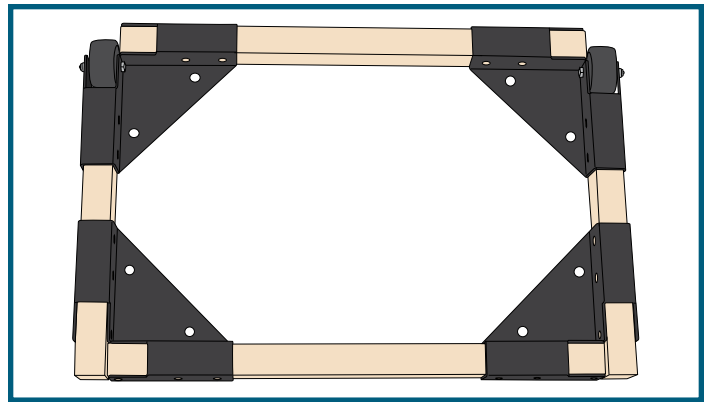


Fig. 2

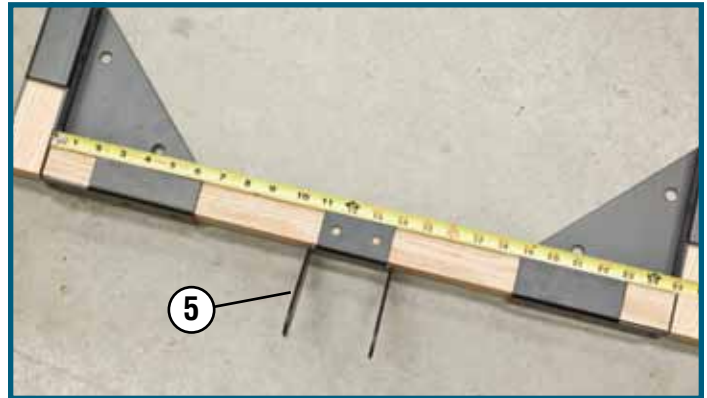


Fig. 3



Fig. 4



Fig. 5



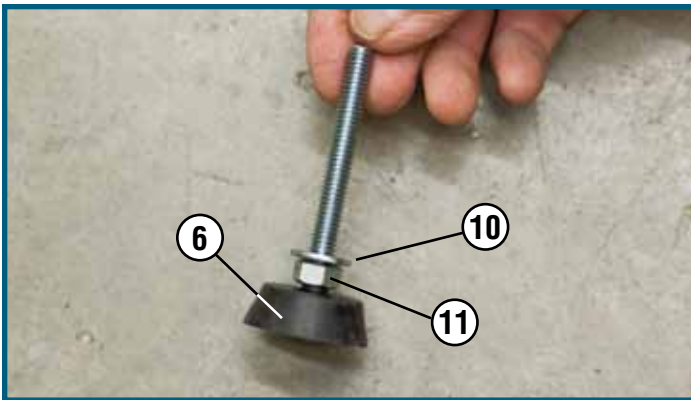


Fig. 6

### Attaching the Leveling Screws

1. Attach one 5/16"-18 Hex Nut (11) and 5/16" Flat Washer (10) to the Leveling Leg (6). **Fig. 6.**
2. Insert Leveling Leg (6) into the side board and fasten it in place with another 5/16" Flat Washer (10) and 5/16"-18 Hex Nut (11). **Fig. 7.**
3. Repeat with other Leveling Leg (6).

### Attaching the Caster Assembly

1. Attach the Caster Assembly (2) with a 5/16"-18 x 4" Hex Head Screw (7) and 5/16"-18 Lock Nut (12) to the Pivot Bracket (5). **Fig. 8.**
2. Attach the Foot Lever (4) to the Pivot Bracket (5) with the 1/2" x 4" Pin (9) and four 1/2" Flat Washers (14) and two Retaining Rings (15). **Fig. 9.**  
**Note:** The 1/2" Flat Washers (14) should be between the Foot Lever (4) and the Pivot Bracket (5).
3. Position and attach the Pivot Bracket (5) to the board with two 5/16"-18 x 2" Thumb Screws (16). **Fig. 10.**
4. Adjust the leveling legs by raising the mobile base and loosening or tightening the hex nuts so the base is level.

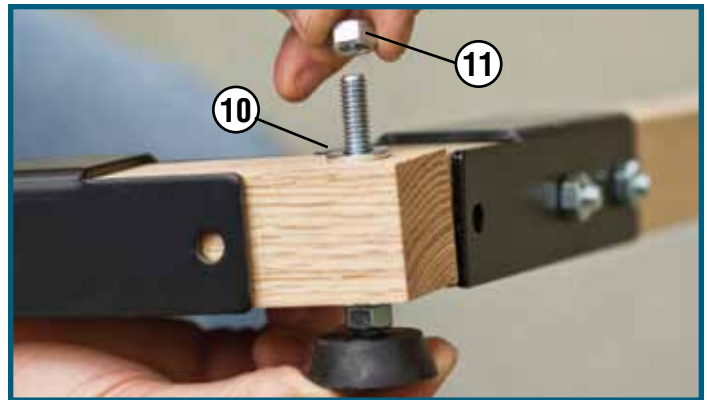


Fig. 7

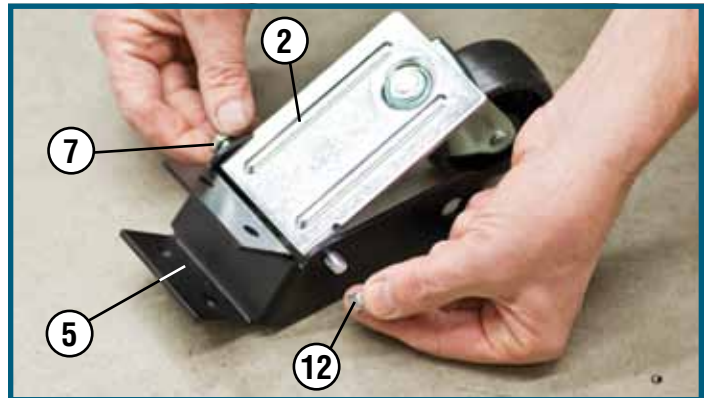


Fig. 8

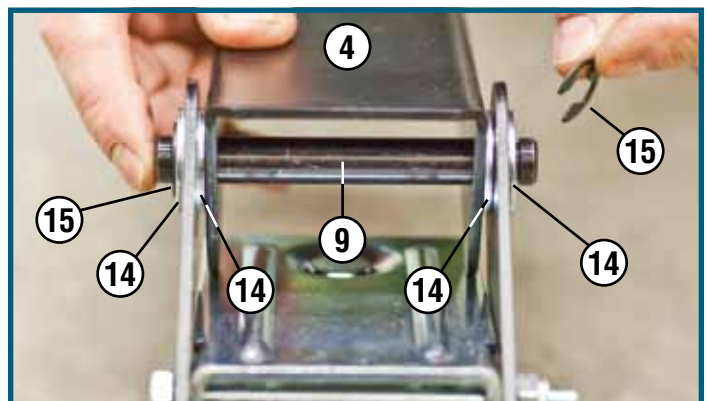


Fig. 9

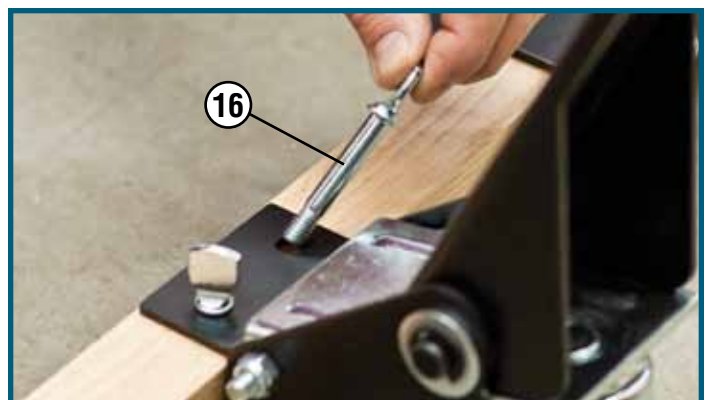


Fig. 10

#### Attention Rockler Plan User

Before starting, please read the plan completely. Check Rockler.com for updates that may not be included on this copy. If you have further questions, please contact our Technical Support Department, 1-800-260-9663 or support@rockler.com