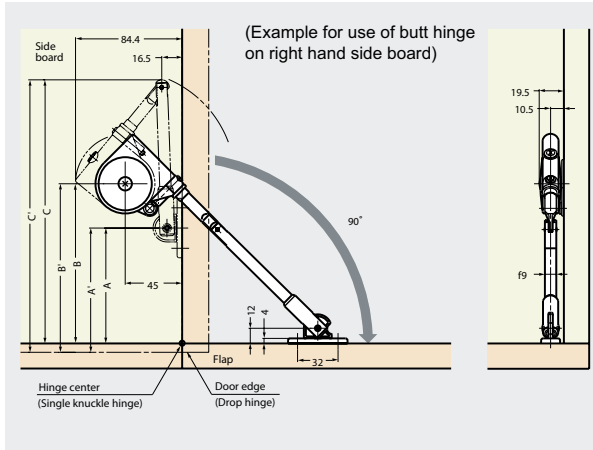


SOFT DOWN STAY TYPE SDS-100 & SDS-C100 LAMP®

Please follow these instructions carefully for proper use. PAT. P (Japan & many other countries)

HOW TO INSTALL AND LOCATION OF MOUNTING PLATES

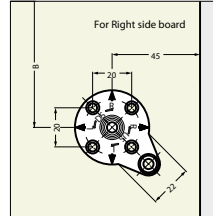


● PLATE POSITION FOR INSTALLATION

Depending on the type of the hinges used, the position of the mounting plate and arm fixing plate should be fixed as indicated below. Each distance for A/B/C is measured from center of butt hinge. In case drop hinge (SDH-001) used, they are from the flap edge.

	A	B	C
Butt Hinge (one axis)	100mm	135mm	218mm
Drop Hinge (SDH-001)	107mm	142mm	225mm

When other type hinges are used, please contact our sales staff.



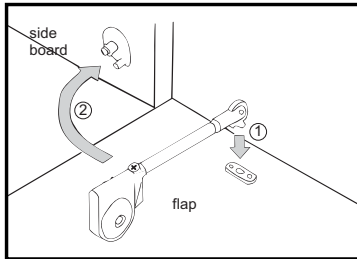
To use SDS- 100 (without catch type), a catching device is recommended.

The installation direction of the mounting plate (Type SDS-100 follows the inscription of "DS".)
For right side fixing, the arrow of "R" on the DS side should point upward vertically.
For left side fixing, the arrow of "L" on the DS side should point upward vertically.

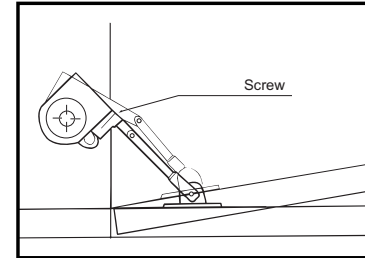
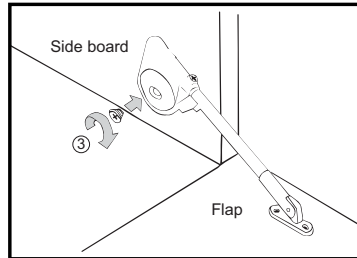
● HOW TO INSTALL

Install the mounting plate and arm fixing plate with the enclosed wood screws at the designated places.

- ① Insert the "key" of the cam of arm-tip into the key hole of the fixing plate. The main body must be placed at 90 degrees angle against the fixing plate.



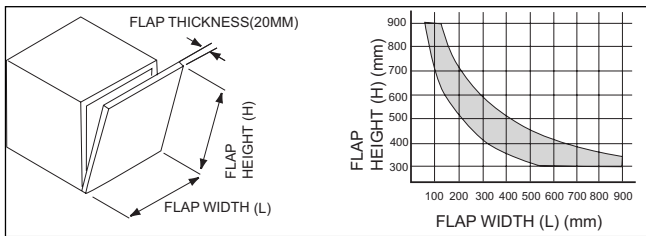
- ② Turn the main body 90 degrees and insert the knurly axis of the mounting plate to the hole of the main body.
- ③ Then fix the main body with bind screw attached.



● ADJUSTMENT

At maximum door opening angle, make the adjustment of arm-fold in straight by adjustable screw of main body on stopper-pin.

THE DIMENSION OF THE FLAP



THE DIMENSION OF THE FLAP

SOFT DOWN STAY must be used taking the size of the flap into consideration. The graph indicates the usable range when using one SDS stay. When using two stays, the width of flap can be twice as large if the height remains unchanged.

(Note) The graph shown to the left is in case of a usual wooden flap of 20mm thick (specific gravity approx 0.5)

- In case of lighter or heavier flap doors that do not fit within the above specified range please contact our sales staff.

MATERIAL AND FINISH

Material: Plastic and steel Finish: Nickel plated (steel)

REMARKS

- To avoid serious damage and/or injury, do not attempt to disassemble the body of SDS stay.
- Please contact our sales staff when you use LAPCON series products under extreme high and or low temperature
- Dimension and specification can be changed with or without notice.



SUGATSUNE AMERICA, INC.

221 East Selandia Lane, Carson, CA 90746
Phone : (310) 329-6373 Fax: (310) 329-0819
Toll Free : 800-562-LAMP
www.sugatsune.com

RTD10000415AA