

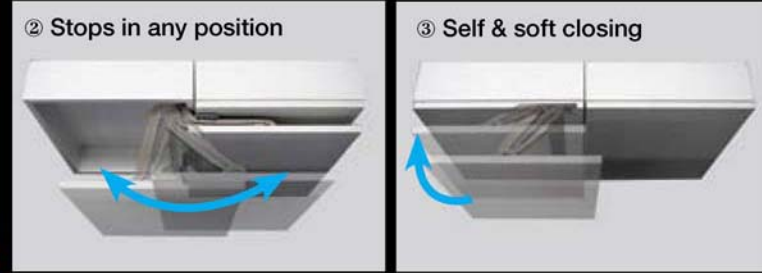
LATERAL OPENING DOOR HINGE

SUGATSUNE
PAT.P (29689)

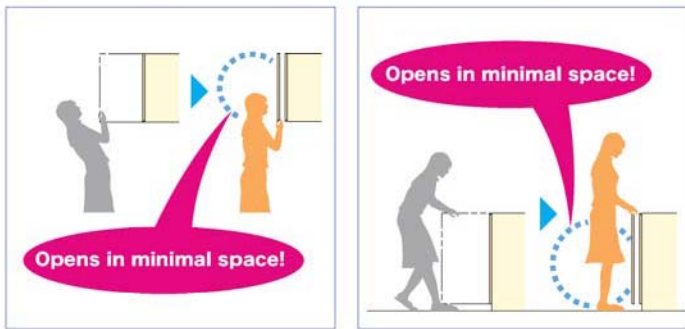


MonoFlat LIN-X hinge™

Innovative hinge with patented technology, which provides a unique "closed flush door" feature.



Lateral Swing Mechanism

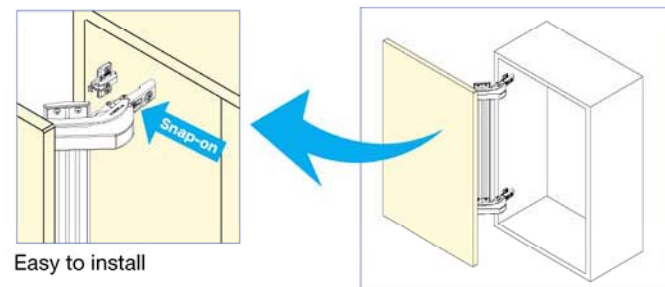


Ideal for tight front space application

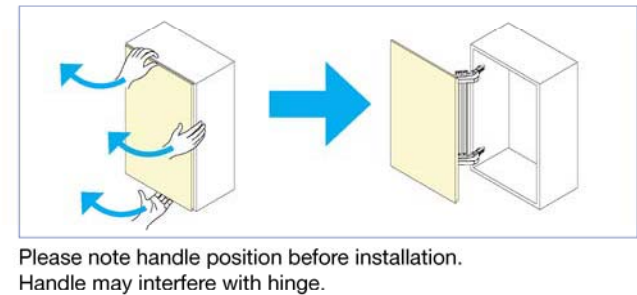
Easy Access with Full Opening



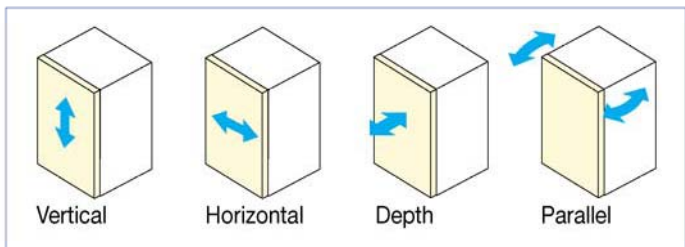
Snap-on Installation



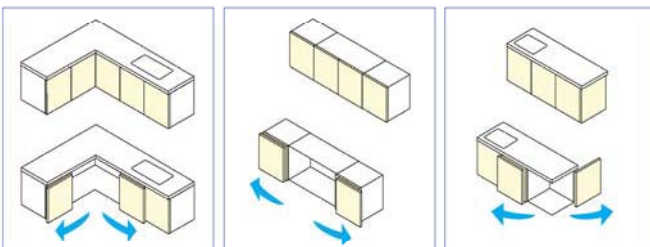
Can be Opened from Various Points



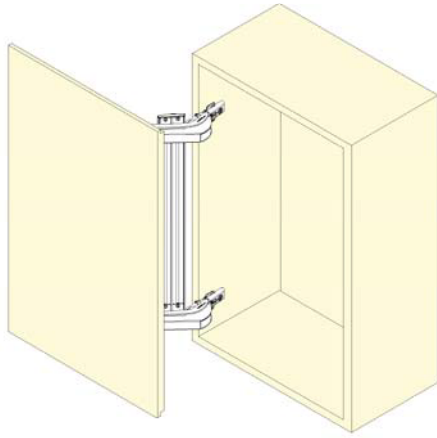
4Way Adjustment



Various Applications



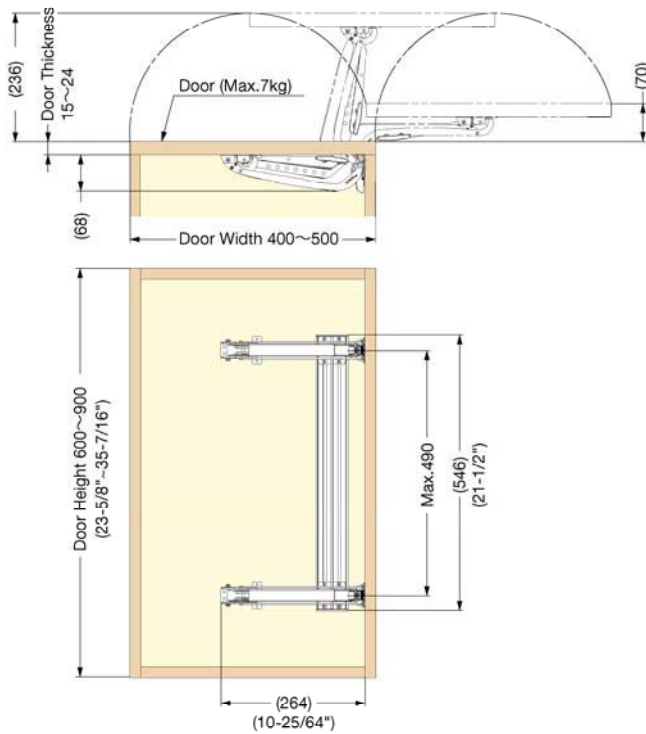
RTD10000692AA



Door Height	600 ~ 900mm (23-5/8" ~ 35-7/16")
Door Width	400 ~ 500mm (15-3/4" ~ 19-11/16")
Door Thickness	15~24mm (19/32" ~ 61/64")
Door Weight	Max. 7kg (15.4lbs) / Door

- **Lateral swing mechanism**
 - Allows doors to swing out laterally in a small radius, ideal for tight front space application
- **Stops in any position**
- **Flush in closed position**
 - Door will close flush against surrounding wall or doors
- **Self & soft closing**
 - Damper equipped for soft & smooth closing at the end
- **Clean appearance**
 - No bottom or top rail required
- **Can be opened from various points**
- **Maximum space availability**
- **Easy installation**
 - Designed for standard 32 system mounting
- **Ideal for various applications**
 - Can be used in single or double door configuration
 - Various opening styles and combinations are possible
 - Cabinets in kitchen, bath and laundry room etc

Item No.	Overlay	Material	Finish
LIN-X450	19mm (3/4")	Steel	Nickel



- *Parts included:
- Hinge Body: 2pcs
 - Mounting plate: 2pcs
- Connecting Bar: 1pc
 - Cover Cap: 2pcs