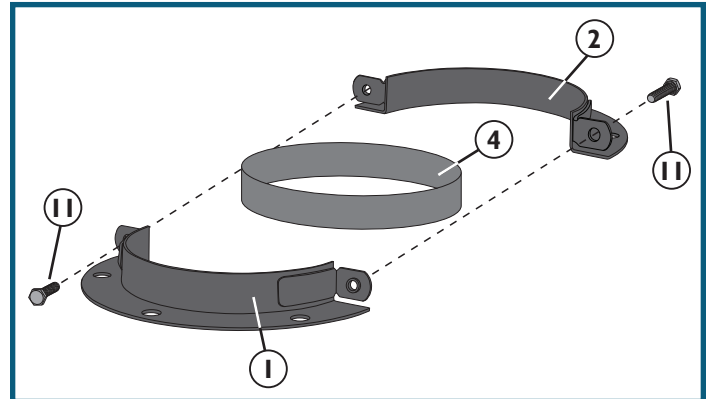


Dust RIGHT™

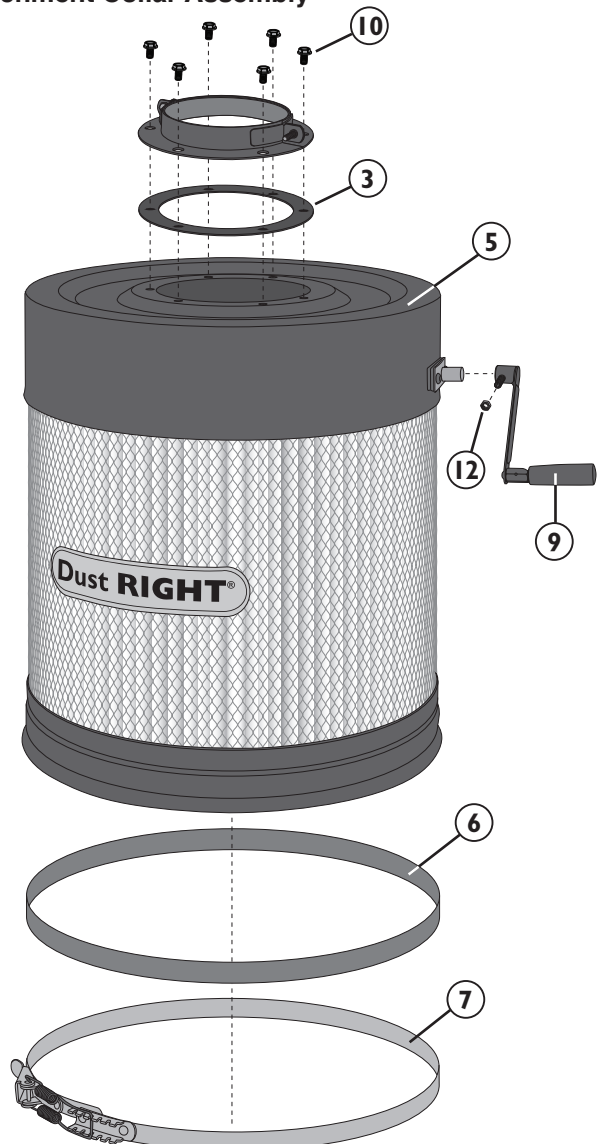
Dust Canister Assembly Instructions

1. Wrap the 30mm Foam Tape (4) around the bottom of the wall mount dust collector outlet, making sure the bottom edge of the tape is against the outlet flange. Trim any excess.
2. Fit the Gasket (3) onto the wall mount dust collector outlet, keeping it toward the bottom, against the flange.
3. Bring the two pieces of the Attachment (1 and 2) together around the Foam Tape (4) on the dust collector outlet and connect them with the 1/4" x 3/4" Hex Head Bolts (11). Note that the Hex Head Bolts will thread into the Attachment Collar (1 and 2) pieces in only one direction, and be sure to align the holes in the Attachment Collar (1 and 2) with the holes in the Gasket (3). Use the Open Wrench (13) to tighten.
4. Bring the Canister Filter (5) to the dust collector outlet, making sure the post for the Foldable Handle (9) is oriented toward the right. Align the holes in the Canister Filter top with the holes in the Attachment Collar (1 and 2) and attach with the 5/16" x 1/2" Flange Bolts (10). Use the Open Wrench (13) to tighten.
5. Slide the Folding Handle onto the post. Use the 4mm Hex Wrench (14) to secure the set screw on the handle; then use the Open Wrench (13) to tighten the nut. (The Foldable Handle is used to spin a paddle that dislodges built-up dust from the pleated filter.)
6. Apply the bottom of the 20mm Foam Tape (6) around the bottom of the Canister Filter (5). Trim any excess.
7. Fit the Plastic Bag (8) over the bottom of the Canister Filter (5), making sure the edge extends at least to the top of the Foam Tape. Install the Clamp (7) tightly around the Plastic Bag (8).

Check Rockler.com for updates. If you have further questions, please contact our Technical Support Department at 1-800-260-9663 or support@rockler.com



Attachment Collar Assembly



PARTS LIST

	Quantity
1 Attachment Collar A	1
2 Attachment Collar B	1
3 Rubber Gasket	1
4 30mm x 600mm Foam Tape	1
5 Canister Filter	1
6 20mm x 1205mm Foam Tape	1
7 Clamp	1
8 Plastic Bag (Not Shown)	1
9 Foldable Handle	1
10 5/16" x 1/2" Flange Bolt	6
11 1/4" x 3/4" Hex Head Bolt	2
12 Foldable Handle Locking Nut	1
13 10mm/12mm Open Wrench (Not Shown)	1
14 4mm Hex Wrench (Not Shown)	1